

WEEE Scrap



Brief Introduction to

Recycling of WEEE Scrap

Eldan Recycling A/S

- at the leading edge of recycling

- * 50 years of experience
- * More than 580 Turnkey Systems and 5000 Single Machines delivered world-wide
- * Design, Engineering, Manufacturing, Installation and After-Sales-Service of Equipment



Recycling Equipment for:

- * Scrap cables & wires
- * Underground cables
- * Jelly filled cables
- * WEEE scrap
- * Complex scrap
- * Aluminium scrap
- * Magnesium
- * Waste tyres
- * Municipal solid waste (MSW)
- * Shredder light fraction (SLF)
- * End of life vehicle (ELV)
- * Industrial scrap
- * Refrigerators



- * The Recycling Industry is a heavy industry, therefore Eldan's Machine Equipment is extra powerfull dimensioned and at the leading edge with regard to Technology and Performance
- * Strong world-wide network of authorised Agents and Representatives
- * Eldan Recycling A/S offers all customers first-class After-Sales-Service with very high availability, including technical back-up and on-line service for any delivered Machine or System.

The input Material

The Eldan System for recycling of WEEE Scrap is capable of processing the following types of input material:

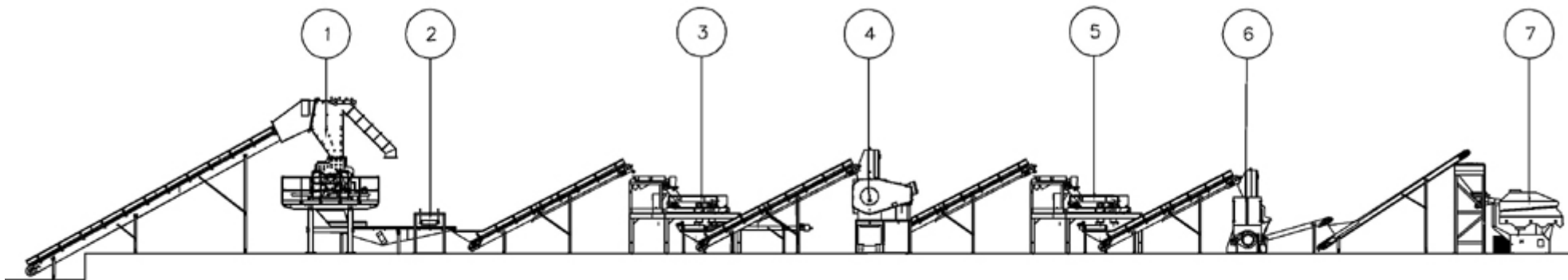
- **Computer Scrap containing:**
 - Main Frame Computers
 - Personal Computers
 - Keyboards, Monitors without the glass tubes
 - Printers
 - Faxes
 - Etc.
- **Small Home Appliances containing:**
 - Videos
 - TV sets without the glass tube
 - Record Players
 - CD Players
 - Hair Dryers
 - Toasters
 - Vaccum Cleaners
 - Radios
 - Coffee Makers
 - Irons
 - Micro Wave Ovens
 - Etc.
- **Handheld Tools:**
 - Drilling Machines
 - Grinding Machines
 - Etc.
- **Electrical Scrap:**
 - Contactors
 - Relays
 - Main Breakers
 - Fuses
 - Contact Bars
 - Switches
 - Instruments
 - Etc.
- **Electronic and Telegraphic Scrap:**
 - Electro Mechanical
 - Switchboards/Relays
 - Computerized Switchboards
 - Printed Circuit Boards
 - Etc.

Small Electric Motors up to approx. 1—1,5 HP



The Input Material

The Modular System



PLANT A

PLANT B

PLANT C

A Pre-Chopping + Magnet Separation:

- ① Shredder S1000/S1500
- ② Overband Magnet
- ③ Eddy Current System

B Granulation + Magnet Separation + Material Sorting

- ④ Heavy Pre Granulator HPG125/HPG165
- ⑤ Eddy Current System
- ⑥ Heavy Granulator HG129/HG169
- ⑦ Separation Table C22/C26

The Shredder (Pos. 1)

In the Shredder the scrap is size reduced into a size, which enables the majority of the ferrous material to be separated from the non-ferrous/insulation and plastic fraction.



The Main Machines

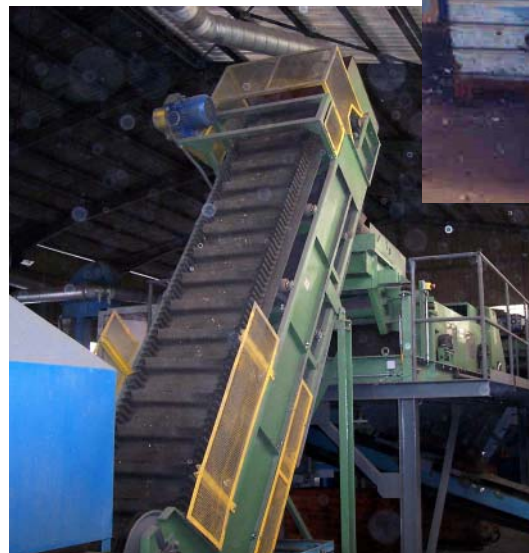
The Overband Magnet (Pos. 2)

The shredded material is transported under the Overband Magnet by means of a Vibrating Discharge Conveyor. The Overband Magnet will remove the majority of the liberated steel.



The Eddy Current Separator I (Pos. 3)

The first Eddy Current Separator will separate out the heavy mixed metal fraction. The stainless steel contained in this heavy mixed metal fraction will be handpicked.



Heavy Pre-Granulator (Pos. 4)

The Heavy Pre-Granulator size reduces the material prior to separation in the Eddy Current Separator II



Eddy Current Separator II (Pos. 5)

In this second Eddy Current Separator, the light mixed metal fraction is separated out.



Heavy Granulator (Pos. 6)

Final size reduction preparing the material for the Separation Table takes place in the Heavy Granulator

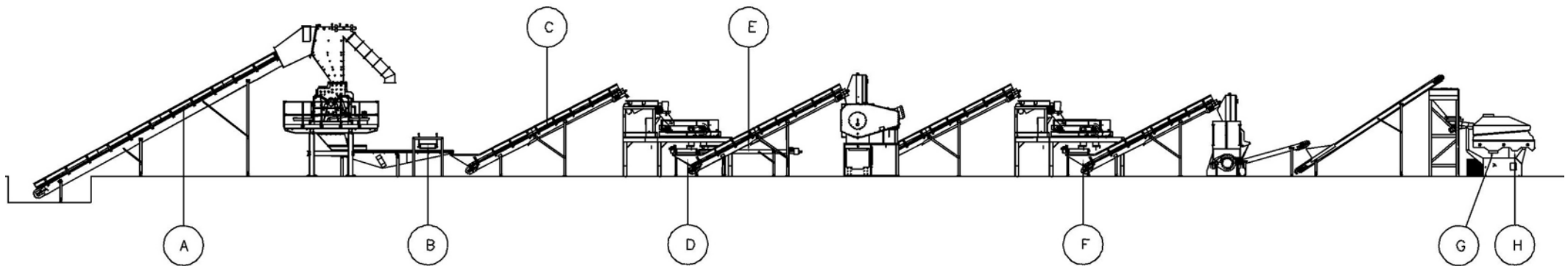


Separation Table (Pos. 7)

The Separation Table is used for final separation of the remaining fraction into a plastic (organic) fraction and a mixed metal fraction.



ELDAN Modular Plant for Electronic Scrap Material Flow



Output Fractions

- Ⓐ Input Material
- Ⓑ Fe after Shredder
- Ⓒ Mixed material for ECS I
- Ⓓ Metal fraction after ECS I
- Ⓔ Stainless steel – hand picked
- Ⓕ Metal fraction after ECS II
- Ⓖ Plastic (organic) fraction from Separation table
- Ⓗ Metal fraction from Separation table

The Material Flow

A) Example of Input Material



B) Fe after the Shredder



C) Mixed material for Eddy Current Separator I



D) Metal fraction after Eddy Current Separator I



E) Stainless steel - handpicked



F) Metal fraction after Eddy Current Separator II



G) Plastic (organic) fraction from Separation Table



F) Metal fraction from Separation Table





The Recommendation

Information important for our recommendation of equipment for processing of WEEE Scrap.

1. Specification of the material you intend to process
2. How many tonnes do you plan to process, daily, weekly, monthly?
3. Are you going to work in shifts? If yes, how many hours is a shift?
4. How many working days do you plan to operate per week and per year?

Call us for an informal talk about a Plant solution which fulfils your specific requirements.

Eldan Recycling A/S

A Member of the Scanrec Group

Værkmestervej 4

DK-5600 Faaborg

Phone: (+45) 6361 2545

Fax: (+45) 6361 2540

E-mail: eldan-sr@eldan-sr.com

Homepage: www.eldan-recycling.com